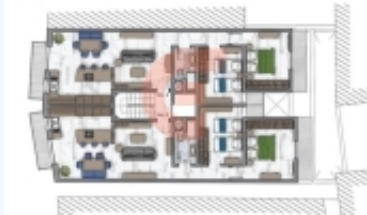


Future Plan Layout - Second Floor



Sannat, GOZO

This new development is located on the outskirts of this sought-after village, in the south of the quaint island of Gozo. The development is situated 10 minutes away from all corners of the island with easy access to all other villages, beaches, and above all the town center. This development is ideal both as a residential or as an investment. The project consists of a lobby and stairwell, leading to a modern lift with access to all levels. All apartments and penthouses consist of a large, spacious, and well-light kitchen dining living room, two/three bedrooms, and a main bathroom together with front and back balconies. The apartments are being offered in shell form with optional finishing packages. Whilst the common parts are being offered finished to a very high standard. The common parts of this development are being offered fully finished including an elevator with marble stairs and a fully equipped lobby. SECOND FLOOR LEVELApartment No 3 €182,000 2 bedroom & 1 Bathroom Int area - 82.50m² Ext area - 8.00m²Apartment No 4 €182,000 2 bedroom & 1 Bathroom Int area - 82.50m² Ext area - 8.50m² Prices of apartments are in shell form state.Garages available are optional. Starting €25,000Common Parts at @ €8,000

BASE INFORMATION:	
Bed	: 2
Bath	: 1
LAND INFORMATION:	
Square feet	: 90
BUILDING INFORMATION:	
Flooring	: Second-Floor
CONVENIENCE:	
General Amenities: Shell-Form,	
Exterior Amenities: Balcony,	
Interior Amenities: Lift/Elevator,	